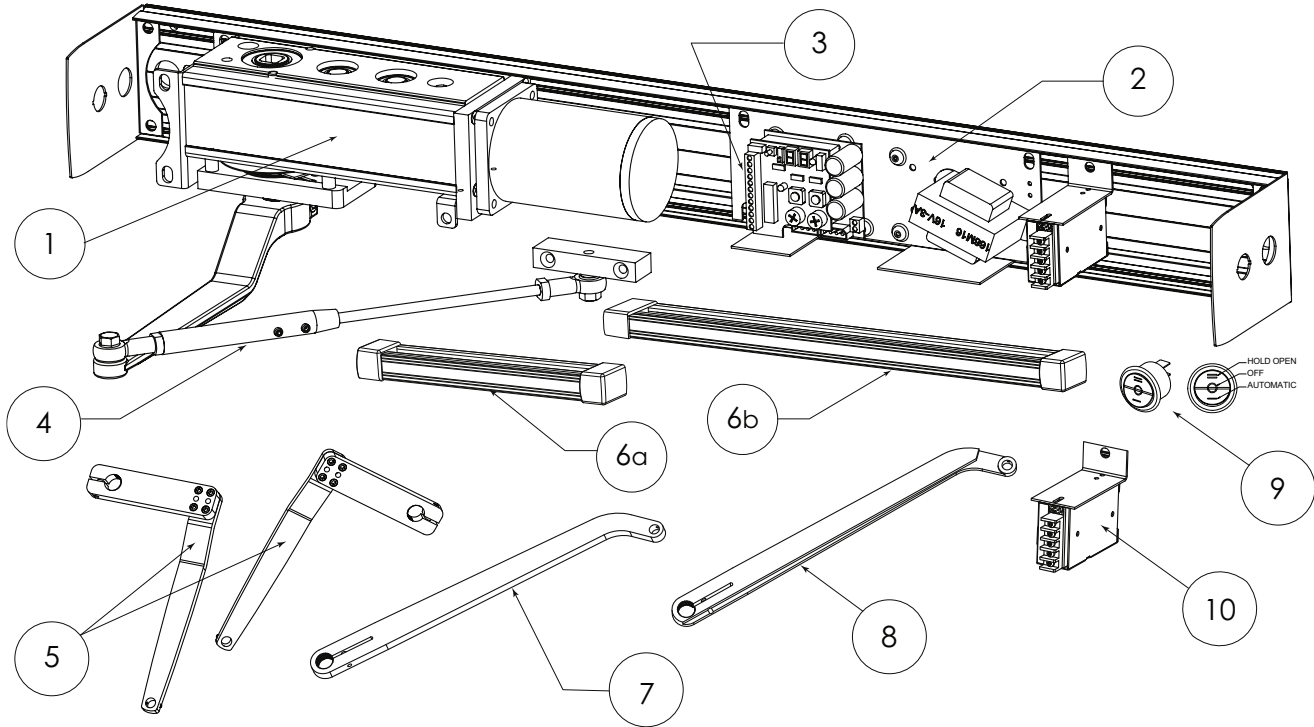


1.1 Replacement Parts



Replacement Parts			
Item	Category	Part No.	Description
1	Operator	WL-PA03	LP Operator (Non-Handed)
2	Control Board	W7-150	Analog Control Board
		W7-160	Digital Control Board
3	Fuse	W5-421	Fuse 3AMP Analog Board
		W5-422	Fuse 3AMP Digital Board
4	Push Arm	W7-200	Complete Push Arm-Clear
		W7-205	Complete Push Arm-Bronze
5	Z-Arm (Pull)	W5-506C	Z-Arm RH - Clear
		W5-505C	Z-Arm LH - Clear
		W5-506B	Z-Arm RH - Bronze
		W5-505B	Z-Arm LH - Bronze
		W5-508C	Extended Z-Arm RH - Clear
		W5-507C	Extended Z-Arm LH - Clear
		W5-508B	Extended Z-Arm RH - Black
		W5-507B	Extended Z-Arm LH - Black

Replacement Parts			
Item	Category	Part No.	Description
6a	Pull Arm Track - Short (for Z-arm)	W5-550	Pull Track Assembly - Clear
		W5-555	Pull Track Assembly - Bronze
6b	Pull Arm Track - Long (for Universal Arm/ Center Spindle)	W5-551	Pull Track Assembly Long - Clear
		W5-556	Pull Track Assembly Long - Bronze
7	Universal Arm	W5-512C	Universal Arm - Clear
		W5-512B	Universal Arm - Bronze
8	Centre Spindle Arm	W5-510C	Center Spindle RH - Clear
		W5-511C	Center Spindle LH - Clear
		W5-510B	Center Spindle RH - Bronze
		W5-511B	Center Spindle LH - Bronze
9	Rocker Switch	WL-Rocker Switch	ON/ OFF/ HOLD OPEN 3 position switch
10	Power Supply Kit	WL-PWRKIT	RS-25-24 Power Supply Kit