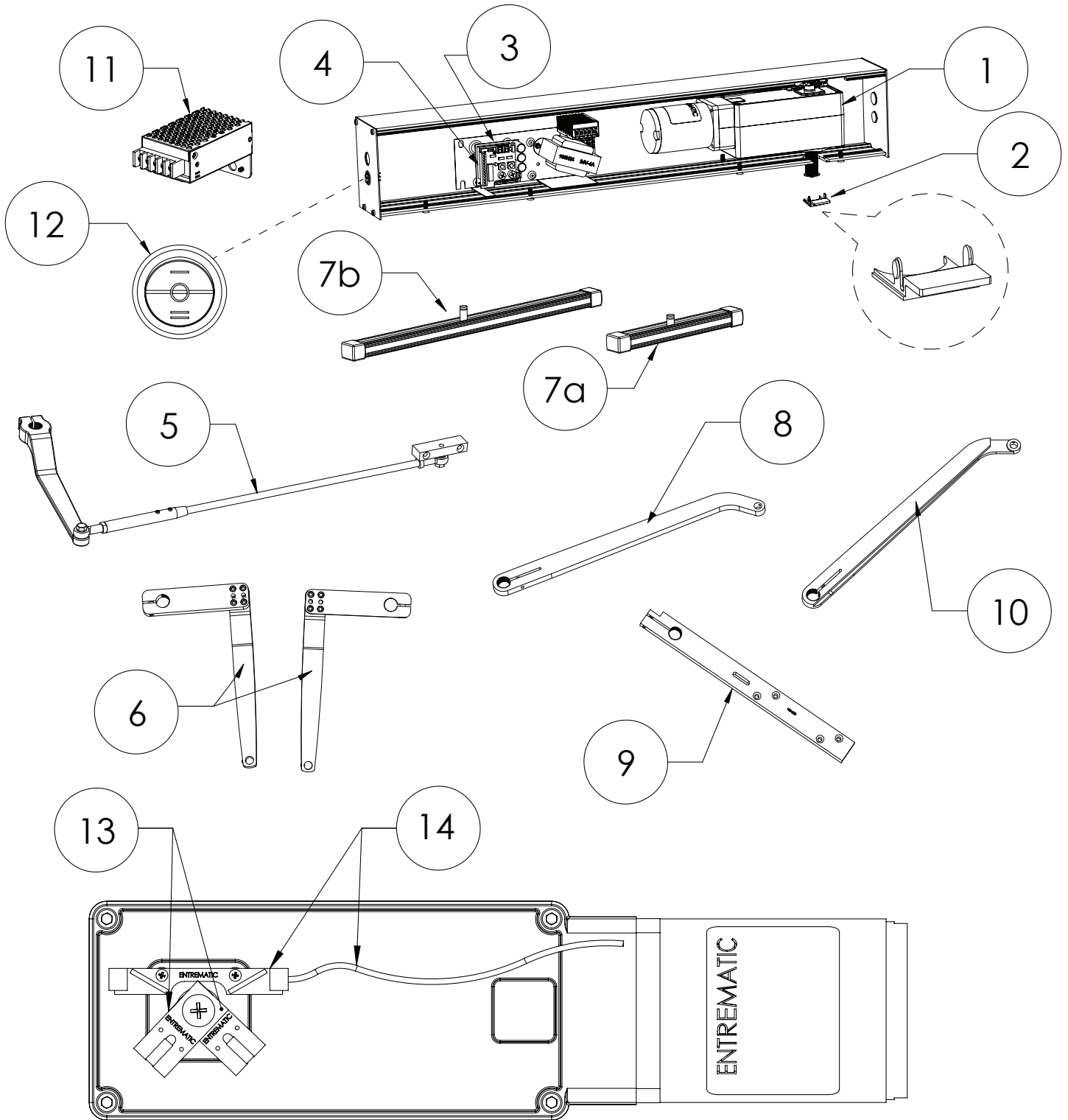


1.1 Replacement Parts



Replacement Parts

Item	Category	Part No.	Description
1	Operator	W7-105L	LH 1/8 hp Operator
		W7-105R	RH 1/8 hp Operator
		W7-107L	LH XP 1/4 hp Operator
		W7-107R	RH XP 1/4 hp Operator
		W7-106L	LH 1/8 hp Push & Go Operator
		W7-106R	RH 1/8 hp Push & Go Operator
		W7-108L	LH XP 1/4 hp Push & Go Operator
		W7-108R	RH XP 1/4 hp Push & Go Operator
2	Header Cap	W5-557	Header Plastic Cap
3	Control Board	W7-130-1	HA Digital Control Board
		W7-135-1	FA Digital Control Board
		W7-180	Dual Digital Control Board (FA8 only)
4	HA8 Fuse	W5-422	3AMP Fuse
	FA8 Fuse	W5-430	4AMP Fuse
5	Push Arm	W7-200	Complete Push Arm-Clear
		W7-205	Complete Push Arm-Bronze
		W5-502C	Cast portion only - Clear
		W5-502B	Cast portion only - Bronze
6	Z-Arm (Pull)	W5-506C	Z-Arm RH - Clear
		W5-505C	Z-Arm LH - Clear
		W5-506B	Z-Arm RH - Bronze
		W5-505B	Z-Arm LH - Bronze
		W5-508C	Extended Z-Arm RH - Clear
		W5-508B	Extended Z-Arm RH - Black
		W5-507C	Extended Z-Arm LH - Clear
		W5-507B	Extended Z-Arm LH - Black

Replacement Parts

Item	Category	Part No.	Description
7a	Pull Arm Track - Short (for Z-arm)	W5-550	Pull Track Assembly-Clear
		W5-555	Pull Track Assembly-Bronze
7b	Pull Arm Track - Long (for Universal Arm/ Center Spindle)	W5-551	Pull Track Assembly Long - Clear
		W5-556	Pull Track Assembly Long - Bronze
8	Universal Arm	W5-512C	Universal Arm - Clear
		W5-512B	Universal Arm - Bronze
9	Center Hung Arm	W5-520	Center Hung Arm 2 3/4"
		W5-521	Center Hung Arm 3 3/4"
10	Center Spindle Arm	W5-511C	Center Spindle LH - Clear
		W5-510C	Center Spindle RH - Clear
		W5-511B	Center Spindle LH - Bronze
		W5-510B	Center Spindle RH - Bronze
11	AUX Power Supply Kit (Optional)	WL-PWRKIT	RS-25-24 Power Supply Kit
12	Rocker Switch	WL-ROCKER SWITCH	ON/OFF/HOLD OPEN 3 position switch
13	Magnets Sets	W5-416	Detects Back check and Latch check phases
14	Reed Switch & Harness	W5-415	Communicates to Control Board the position of door